



ZoneMaster™

Retail zone measurement made simple

ZoneMaster™

Developed to address the time consuming and tedious task of measuring retail zoning areas, ZoneMaster™ draws on over two decades of drawing measurement expertise, developed at the cutting edge of the drawing measurement market. Encapsulating all the tools needed to make zoning measurement easy and profit generating, ZoneMaster™ delivers the tools required to enable CAD, PDF and image (scanned) files to be measured quickly, with confidence and absolute accuracy, whatever your zoning methodologies.

Zone slicing made easy

The task might sound easy on the face of it, but accurately and efficiently slicing up floor area measurement into zones is a time consuming task that requires high levels of attention.

To do the job accurately, on time and on budget, you need a tool specifically designed for the task, quick to learn, easy to adopt, wrapped within an easy to understand framework able to handle drawings of all types and scales. It needs to be more than a simple file viewer or CAD program and it can't afford to be a jack-of-all-trades. You're searching for a specialist application that's engineered for the task. You need a champion.

You need ZoneMaster™.

Built on the foundations of one, if not the best drawing measurement engines in the marketplace, OnSight™, ZoneMaster™ draws on the over 25 years of experience in the



business of drawing measurement encapsulated in a single focused product.

Able to handle all of the common drawing formats found in the industry, user can now effortlessly, and with minimal training, cut-a-swathe through projects with speed, ease and confidence. What was once a time-consuming task can now be dispensed in minutes, not hours.

The industry called – we replied

ZoneMaster™ was developed by demand. Demand for a system that could cut through zoning measurement easily whilst managing different and possibly changing zoning regulations. The system does therefore allow each and every user to customise their zoning methodologies, allowing for ultimate flexibility and future proofing every users investment against a changing market.

The system that can do all the zoning cutting and slicing you'll ever need, but before all of this happened we focused on one thing – you.

The end-user, the person at the keyboard is the most expensive part of the equation and it was important to our standards of design that we never lost sight of this, after all, making the end-user go fast is what it's all about. Accuracy and ease of use is a 'given', but the active ingredient to commercial success is speed. That's why, our design rationale put the user at the centre and we built the system around them.

What you want is what you get (wywiwyg)

You want an easy to learn system, one that delivers confidence by the bucket load and makes good on all the promise you know the system has to offer. You want a system that takes the stress and inaccuracies out of the measurement task. You want a system that impresses - impresses yourself, impresses the

client, impresses management - after all, you were probably an instigator in the purchase so you want a system that proves you make good recommendations and decisions. You also want to go home on time at the end of the day rather than staying over to catch up.

You want ZoneMaster™

So what does it really do?

In short, it allows you to take accurate speedy measurement from a variety of files, both CAD based AND scanned, even PDF's, direct from your screen. Projects can even have multiple drawings, even of mixed format and scales - an industry first. So now there's no need to print any drawings – that's just time wasted.

Firstly, the user selects one or more drawings and loads them to screen. Scales are set (if needed – true CAD file self scale) and the area(s) to be evaluated are defined. Then things really start to get good. If there are columns obstructing the floor, these can be defined and cut out of the floor area. Likewise, stairs and escalators can be handled in the same ease-to-use approach; even reduced ceiling height areas can easily be defined.

Finally, the front profile of the shop front is then identified including its extents, and ZoneMaster™ does the rest, effortlessly, and instantly segmenting the floor space in the selected zoning bands.

And it can even get easier than this if the architect has already highlighted the key area in a supplied CAD file format. ZoneMaster™ can automatically measure this is the prime area in a single mouse click. It really doesn't get any easier.

A master 'picture' area showing the project in total keeps you in touch with the task as a whole and multiple drawings can be stacked or tiled

KEY FEATURES

- Windows XP - Windows 11
- Multi layered with full fill-colour and line-colour control for optimum presentation
- CAD system independent, runs without the need for CAD
- Supports all common drawing format files including DWG, DXF and PDF
- Object repositioning after measure
- Clone objects to speed up common retail-unit measurement
- Auto measure pre-defined areas in CAD files
- Edit and adjust anything any time
- Variable transparency tool to give the look you want
- Object cutting and slicing tools (for staircases, columns etc)
- Offset/insets tool (shrink and enlarge floor areas as required)
- Visibility controls at layer, object and image file levels
- Object repositioning
- Unlimited drawings per project
- Stacked drawings supported (multi floor developments)
- Tiled drawings supported (for projects that span drawings)
- Layer within layer (nested layers)
- Out of scale adjustment (X & Y)
- Dynamic scale changing even after measurement

into the project as needs dictate with the system allowing for floor areas to be cloned from unit to unit and from floor to floor. Duplicated units on multi storey developments really are easy. And if they have minor differences it's still not a problem – ZoneMaster™ gives you all the tools to make quick tweaks to the measures. But the system doesn't stop there. It comes loaded with a host of additional tools for those very complex projects that seem to pop up even now and then. If you have sight line issues, it's not a problem. ZoneMaster™ allows you to define sight lines and make additional segmented cuts of your floor zones for added value.

These of course are simple tasks and the system is full of additional tools to manage even more complex measures and tasks. The list is impressive even by our high standards but if you need to shrink and/or expand area objects, say to allow for skirtings (as if), it's a simple task – the tools are already there.

And, if you have other measurement tasks to undertake that don't involve zoning, the system will undertake these as well – after all, it is built on the world renowned OnSight™ measurement platform, so the measurement world really is your oyster so to speak.

Is it easy to use? You bet!

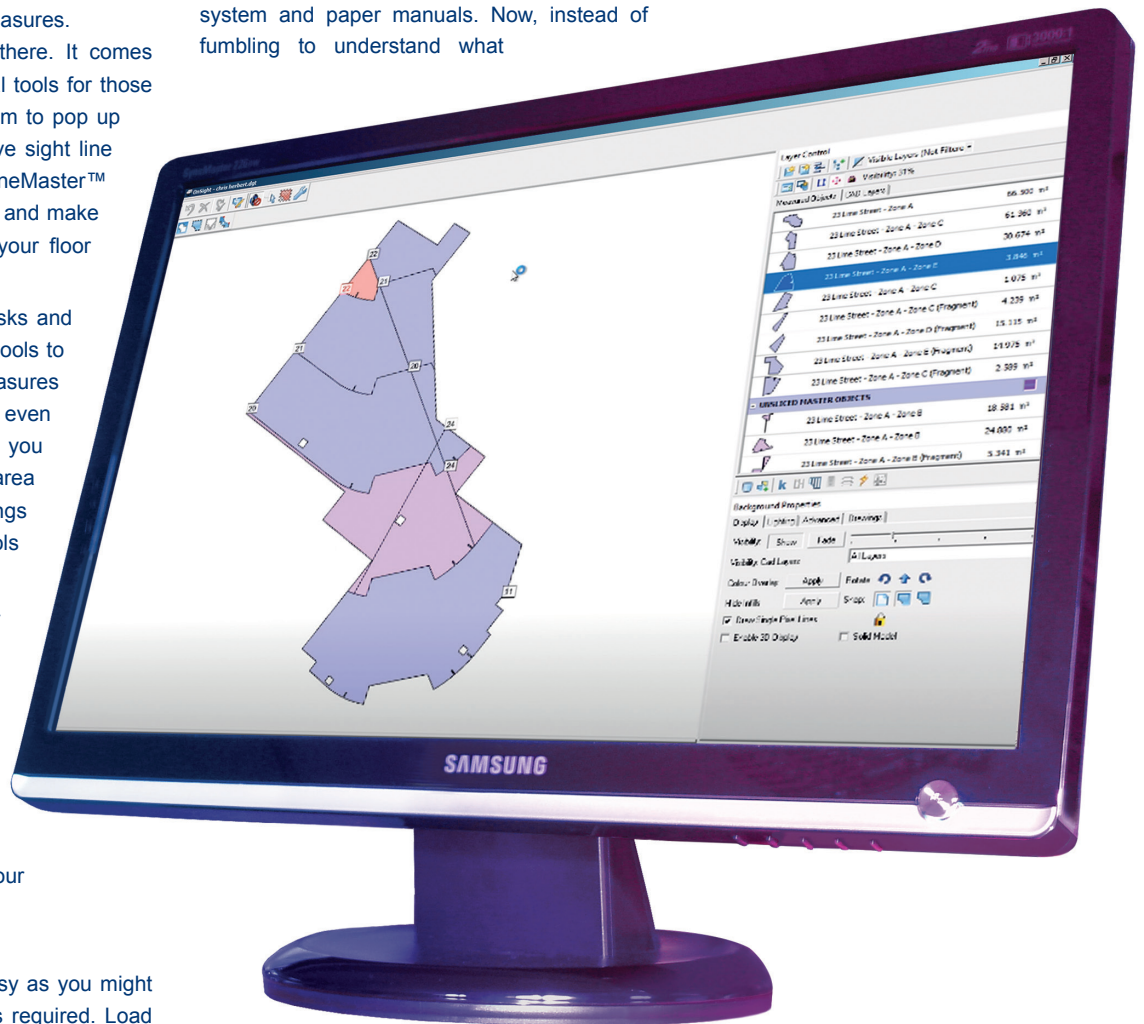
Using the system is just as easy as you might hope, no knowledge of CAD is required. Load a file, pick a tool, click on the objects corners or ends and watch as the scaled answer is written to the results grid. With CAD files it's precisely accurate and fast too. It's like digital tracing but better. 'Point-click-answer' is a good way of summing it all up, and, if you do make a mistake, it's easy to edit.

Flattening the learning curve

But delivering all the new features we've built into the latest version is only half the story. Drawing on our experience with our other systems we have enabled our new systems with multimedia based Help rather than a simple flat file help system and paper manuals. Now, instead of fumbling to understand what

Nested layers

Like our other measurement solutions, ZoneMaster™ continues to make use of the well adopted approach of measuring in layers. But even this technique has been re-engineered



you need to know, users watch real-time video with narration. Uptake of information is almost immediate and the learning curve is flattened, leveraging more profit from the investment right from day one. No other system is as easy to implement as ZoneMaster™.

with unlimited layers and even nested layers (layers within layers) are possible giving yet even more flexibility to a great approach and allowing every user to keep control of a growing take-off, allocating their measures to the right 'pigeonhole'. You can segment your project by

- Automatic & user type annotation
- Full undo editing
- Compare drawings for revision changes
- Unlimited and user definable zoning styles for all situations (4.57m, 6.1m, 9.14m, ABC+R, ABCD+R, ABCDE+R etc)
- Axis cross hairs for alignment when measuring (rotatable)
- Zoom and pan interface
- Video based Help system for fast learning
- Toolbar button resizing for better screen clarity
- Layer style tools for faster consistent project setup

- HotLink™ enabled for single click transfer of results to other applications
- Multiple format printing (mono and colour)
- Full report file export to Excel™
- Fully dynamic (on-the-fly updating) export to Excel™
- Twin screen and touch screen supported
- On-going development and support

ZoneMaster™

Accurately slicing up floor areas for zones has always been a long-winded and time consuming task – until now. ZoneMaster™ instantly streamlines each and every project no matter how complex.

building, floor or even unit-by-unit, the choice is entirely yours.

Teams of users haven't been overlooked either – all user preferences, common data, styles, descriptions and colours can be stored centrally, allowing the system to deliver uniformity across the team as well as making hot-desking a reality.

3D as standard

Take-off doesn't stop at 2D though. Even though the plans you're measuring are 'flat', ZoneMaster™ offers every user the ability to develop 3D models right out of the box. You can give your zone take-off real 'feeling' by simply adding in walls and ceilings (if you want to make a presentation to key clients) Walls can be effortlessly extruded to give them height and even doors and window openings can be cut! You won't do it on every project, perhaps you won't ever do, but when you really want to impress, it's easy to develop a 3D view of the project without much of a learning curve – we're kept it simple but it still really works.

Reports, HotLink™ and Excel™

Once you've finished your measure, we haven't forgotten you'll want to present the answers either, so ZoneMaster™ comes complete with exports to Excel™, picture-rich graphical reports and our dynamic HotLink™ tool allowing all the take-off answers to flow seamlessly into Excel™ for you to post into the cells of your choosing. You can therefore, stay with your current spreadsheet design whilst harnessing ZoneMasters™ take-off power. Dynamic linking takes care of everything, meaning and drawing take-off changes flow seamlessly through into your spreadsheets. It really couldn't be smoother.

Specialist hardware

And to make users even more efficient, ZoneMaster™ supports twin-screen set-ups as standard, allowing non essential tools to be moved to a second screen making way for bigger drawings and therefore less zooming/panning, speeding up the user and forcing even more efficiency from the system. But the engineering doesn't stop there, ZoneMaster™ is also out-of-the-box ready for a selection of wide screen hi-definition touch-screen monitors squeezing even greater returns from the investment (up to twice as fast). If you want to stay with a simple single screen set-up, that's fine, but ZoneMaster™ is ready to take you further up the efficiency ladder as soon as you're ready.

After sales support

Of course, when you have purchased and installed ZoneMaster™ the relationship doesn't stop. Software moves on, as do techniques, not to mention your Windows operating system, so we are constantly refining and improving the system to ensure you have the best solutions to keep you ahead of the game.

Our on-line knowledge base gives users access to support bulletins and of course, during normal working hours our development team are ready to field calls. But what of updates you ask? These are automatically detected by the system whilst in-use and the user prompted to initiate the download. Installation is totally automatic ensuring our user base is as up-to-date as we can make them.

ZoneMaster™ - taking you to the next level.

For further details on ZoneMaster™ and all other Visual Precision solutions contact your local authorised agent or our UK head office now and our information pack is yours by return.



Visual Precision

Visual Precision Limited
2 Sycamore Tree, Elmhurst Business Park
Park Lane, Elmhurst, Staffordshire WS13 8EX
T: +44 (0)1543 262222 F: (no longer in use)
E: sales@visualprecision.co.uk
W: http://www.visualprecision.co.uk

AT A GLANCE

USERS

Designed specifically for Surveyor and Estimators and dedicated to the task.

OPERATING SYSTEMS

Windows XP - Windows 11

SUPPORTED FORMATS

A wide range of CAD and picture file formats are handled by the system. DWG · DXF · DWF · JPG · BMP · TIFF · PDF. More formats constantly under development.

MODES

User definable zoning methodologies

DISPLAY

Full on-screen graphics, total colour and line thickness control, layer management, multi layers, tiered layers, visibility, hatching and translucency control. Twin screen support as standard.

OUTPUT

Paper to printer
Mono & colour supported
Export to Excel™
Dynamic HotLink™ to Excel

TRAINING

On and off-site training in the package. Multi media based tutorials and Help system for rapid take-up.

AFTER SALE

Automatic upgrades
Web support
Telephone support
On-going development

System requirements:

Windows XP or later. See website for current hardware specification (www.visualprecision.co.uk)

ZoneMaster, OnSight and HotLink are registered trade marks or trade marks of Visual Precision Limited.

Microsoft and Excel™ are registered trademarks and trademarks of Microsoft Inc.

© Visual Precision Limited 2026. All rights reserved

E&OE Specifications may change without notice.

Your ZoneMaster™ reseller: